



## Directions:

### From I-55 North:

Take Carlville Exit 60, then south on E. Frontage Road to North 16th Avenue, then east to Eagle Ridge Drive.

### From I-55 South:

Take Exit 52, then east on W. Union Avenue, then North on Route 66 to East Frontage Road. Continue on Frontage Road, then east on North 16th Avenue to Eagle Ridge Drive.



The City intends to lease 41 residential lots, subject to the terms and conditions of a lease and the recorded covenants and restrictions, near Lake Lou Yaeger within a subdivision commonly known as the Eagle Ridge Subdivision. The lease term will be for a period of sixty (60) years with an option to renew. The City will begin to accept bids for leases on January 8, 2021. For more information on the bid process, please visit the city's website at [www.cityoflitchfieldil.com](http://www.cityoflitchfieldil.com) or call the City of Litchfield at 217-324-5253.

# EAGLE RIDGE SUBDIVISION



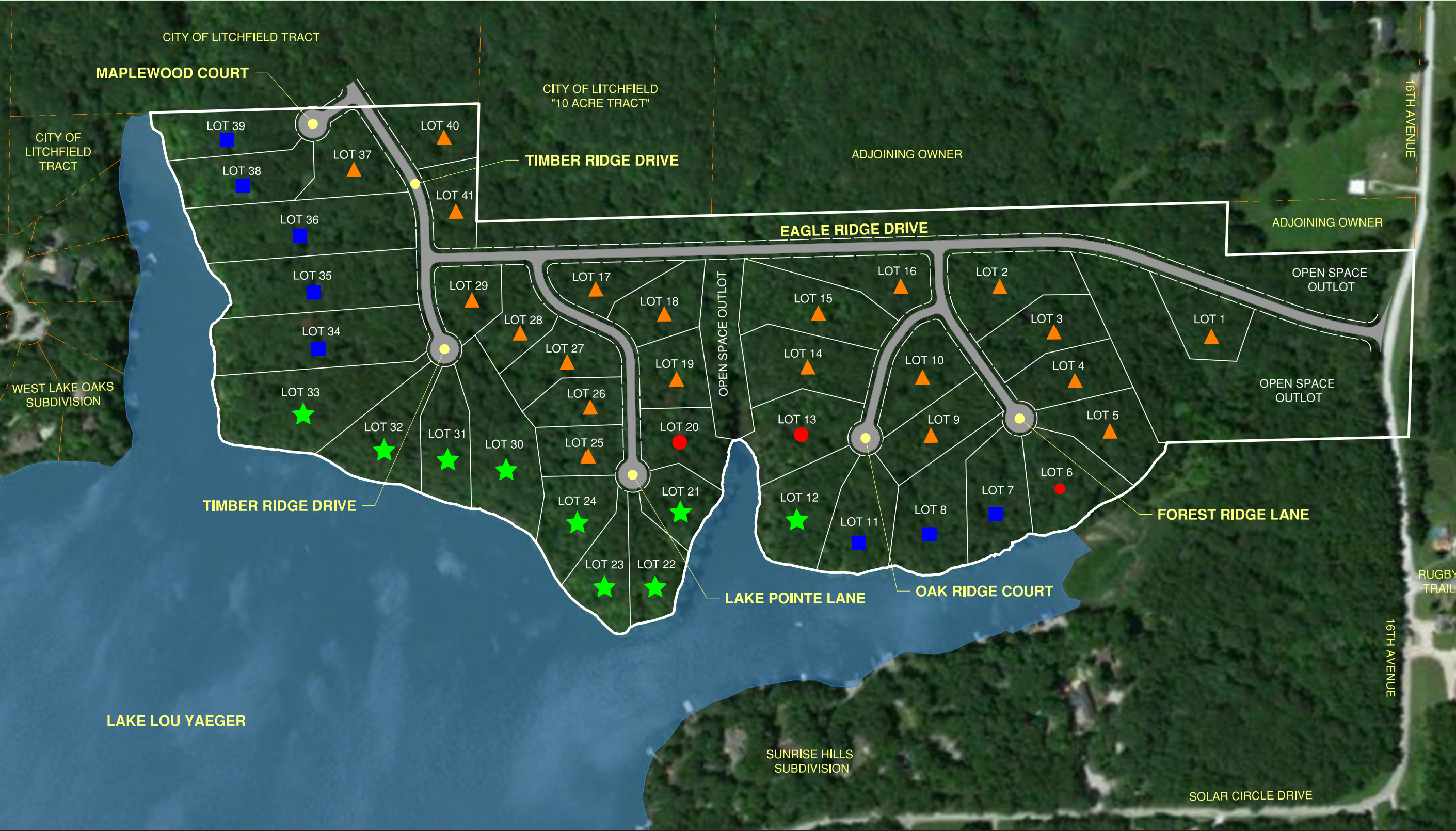
**New 41-Lot Subdivision on Beautiful Lake Lou Yaeger**  
**Water Front Lots**  
**Wooded Lots**  
**Lake Frontage Lots**  
**City Water**

## City of Litchfield

120 E. Ryder Street  
 Litchfield, IL 62056  
 (217) 324-8151

**Now Available!**





# Site Plan

Description	Suggested Minimum Bid
▲ Wooded Lots	\$50,000
● Water Front Lots	\$75,000
■ Lake Frontage Lots	\$125,000
★ Premium Lake Frontage Lots	\$175,000