

We invite you to come and get your kicks on Litchfield's Route 66!

Visit

Litchfield

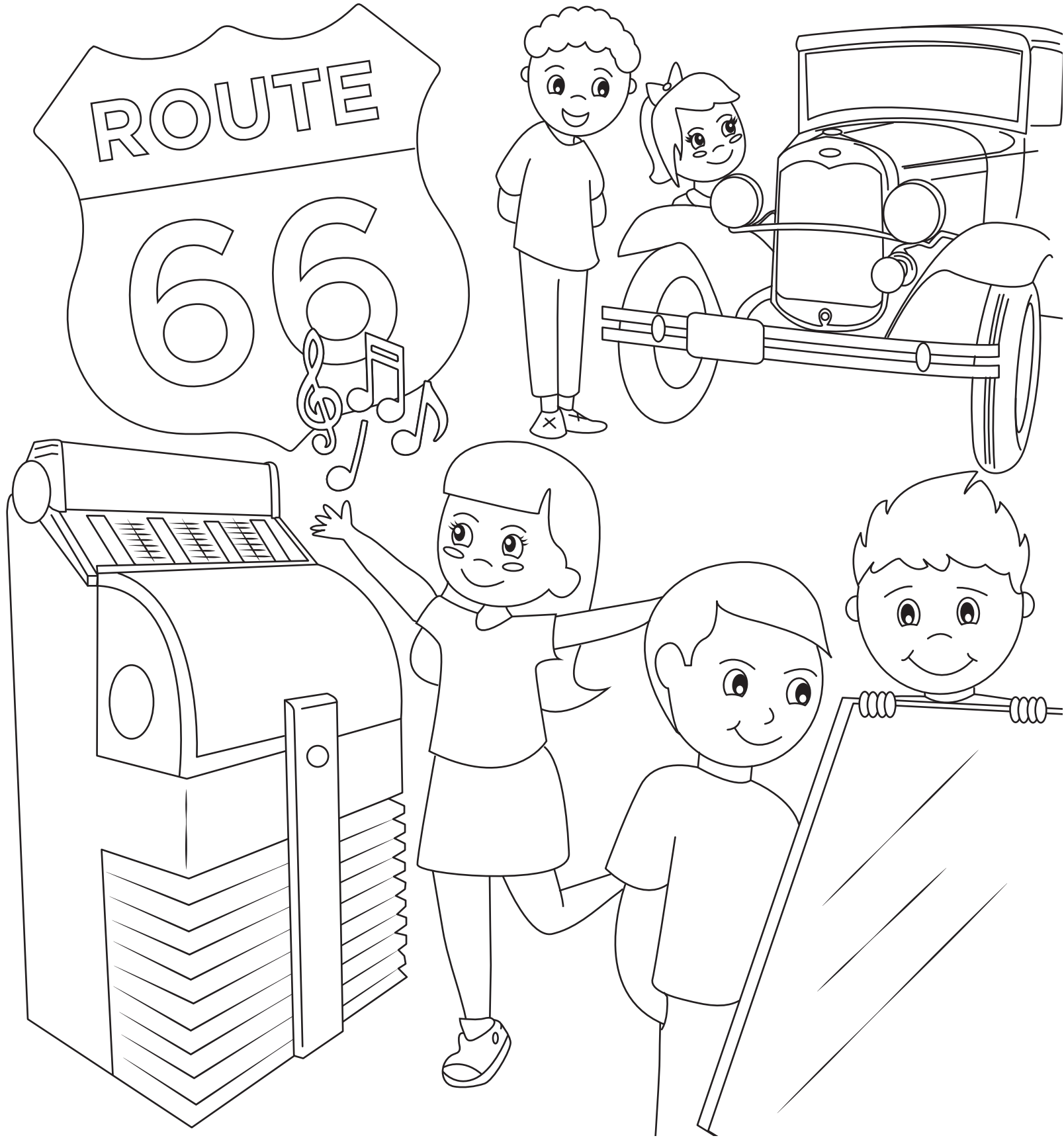
ILLINOIS

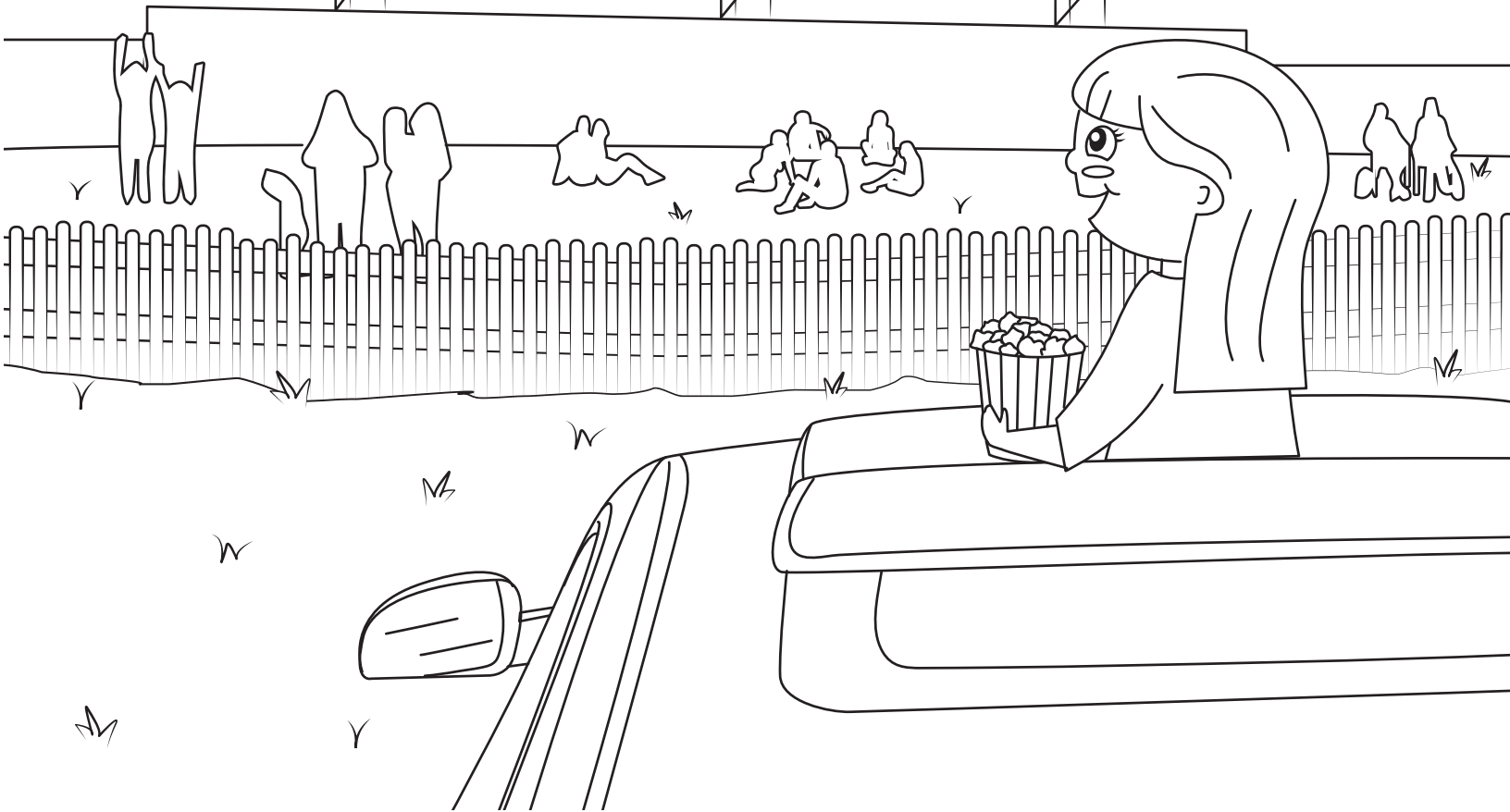
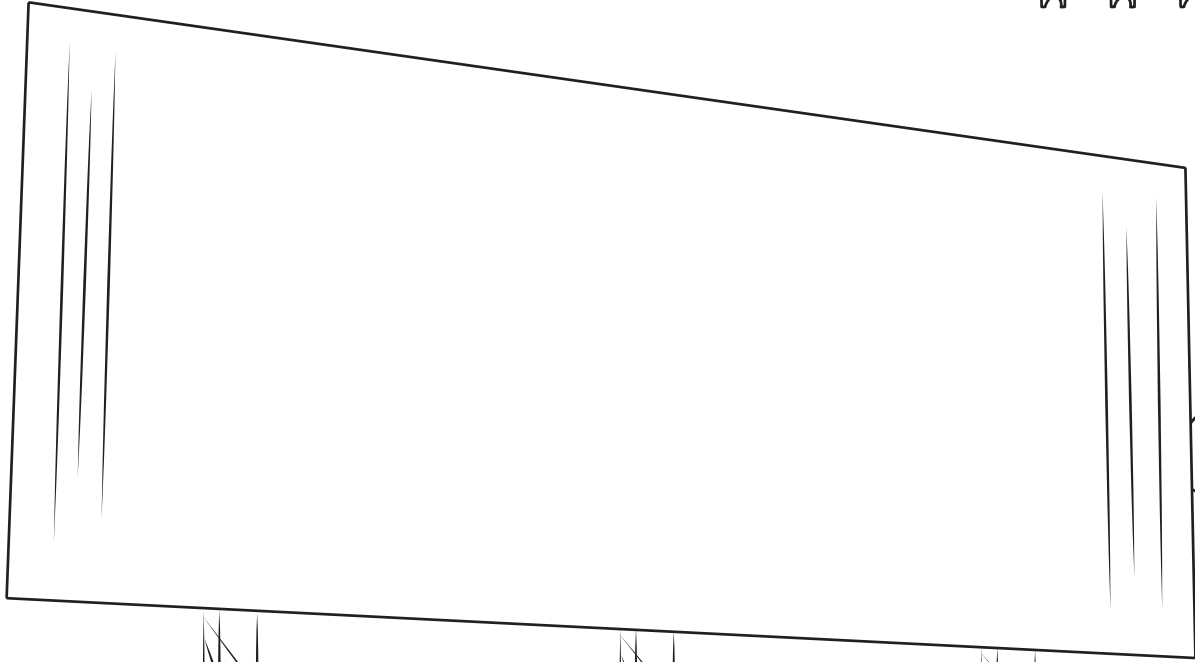
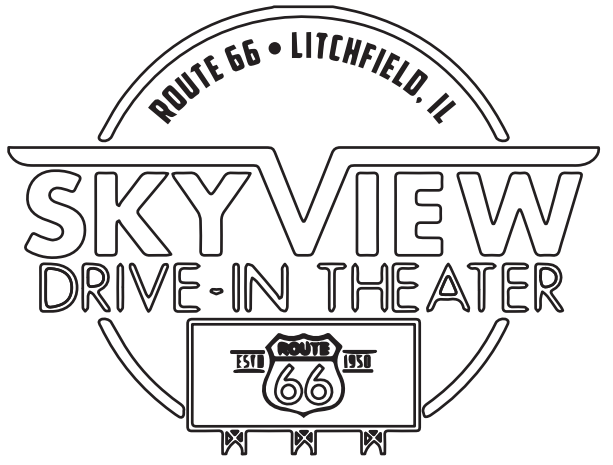
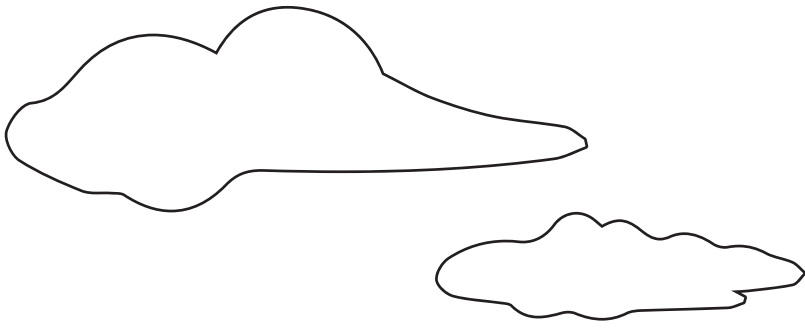
Kids Coloring Book



LITCHFIELD MUSEUM & ROUTE 66

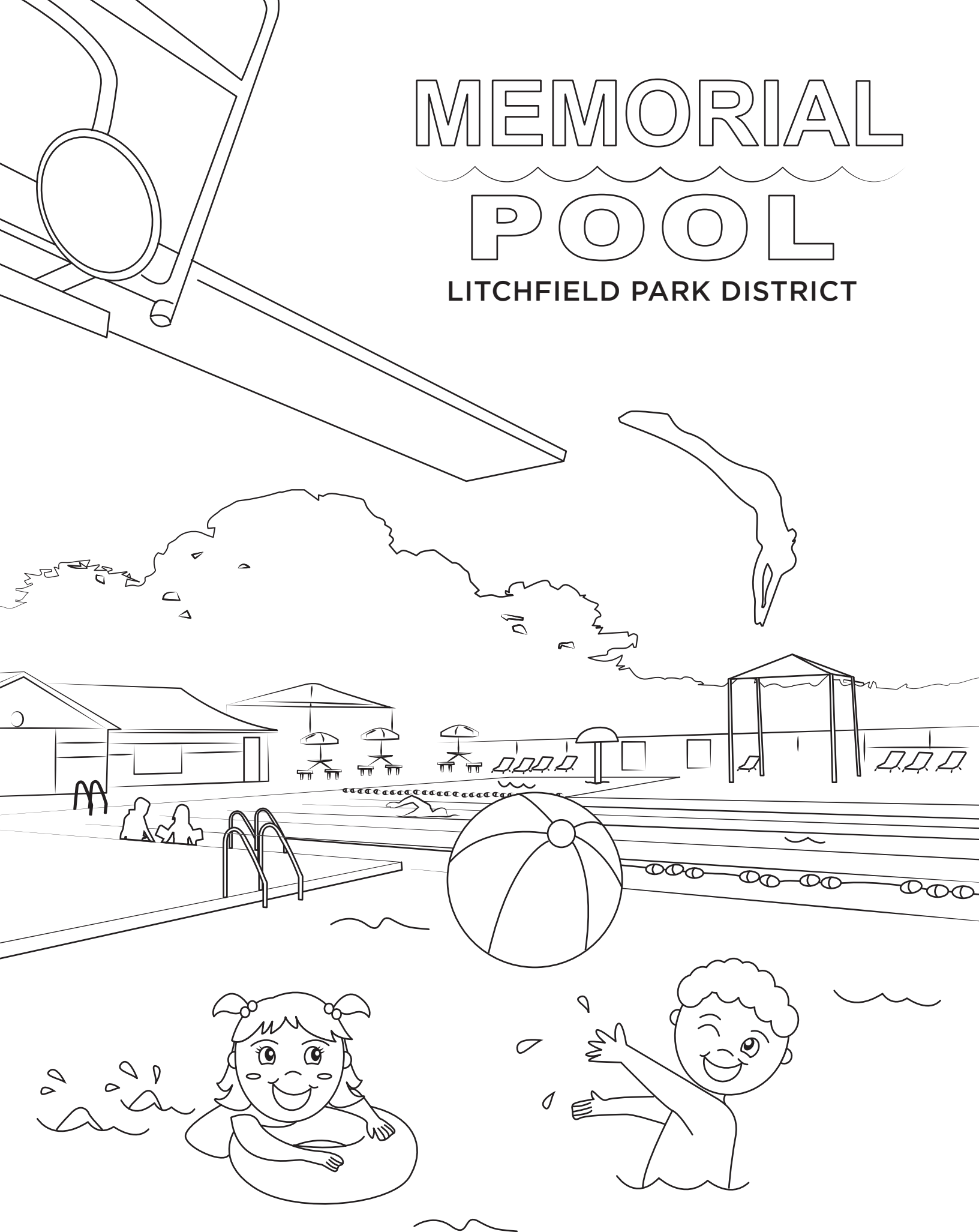
WELCOME CENTER





MEMORIAL POOL

LITCHFIELD PARK DISTRICT

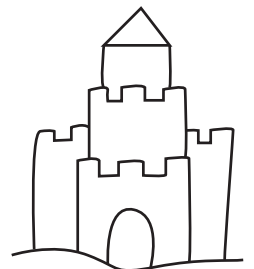


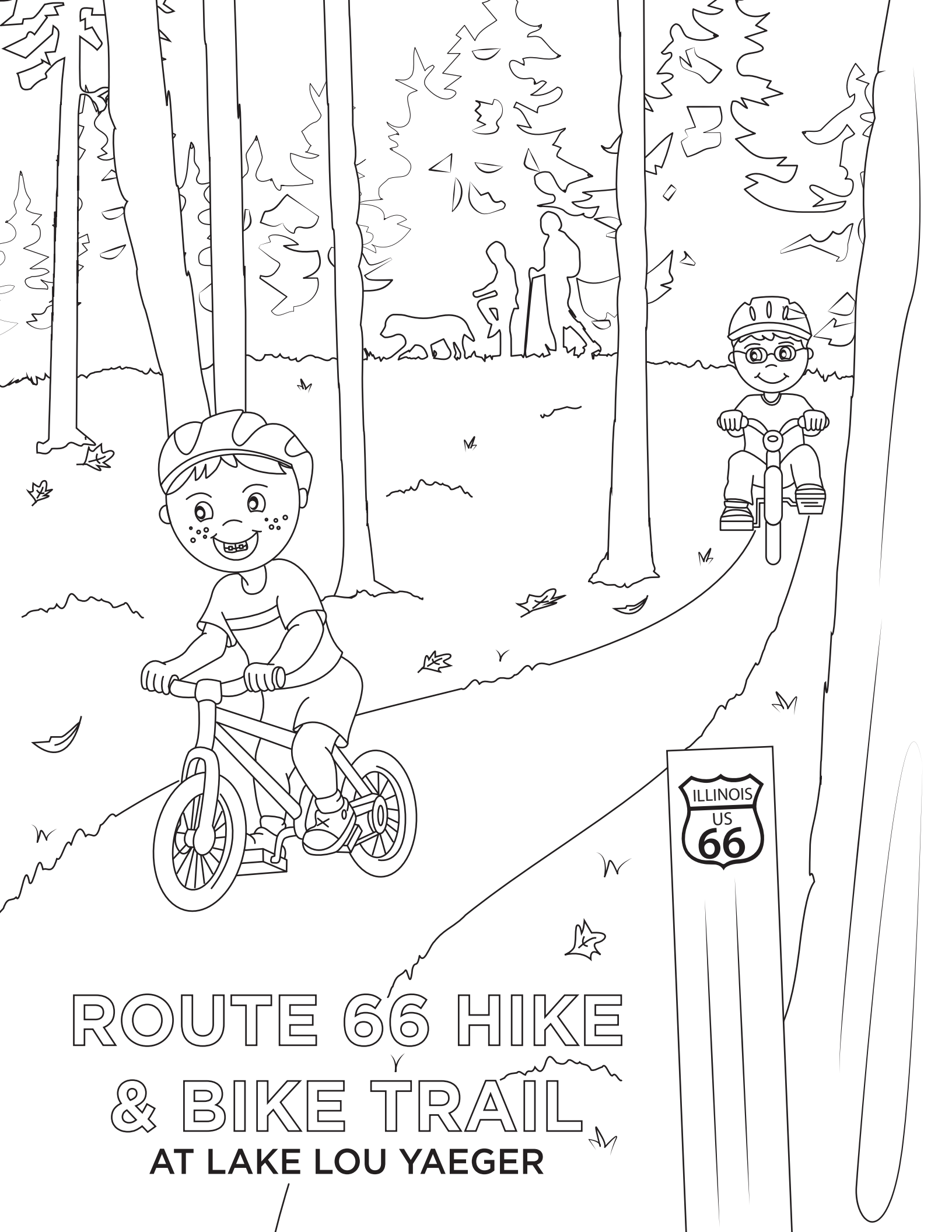






Lake
Lou Yaeger



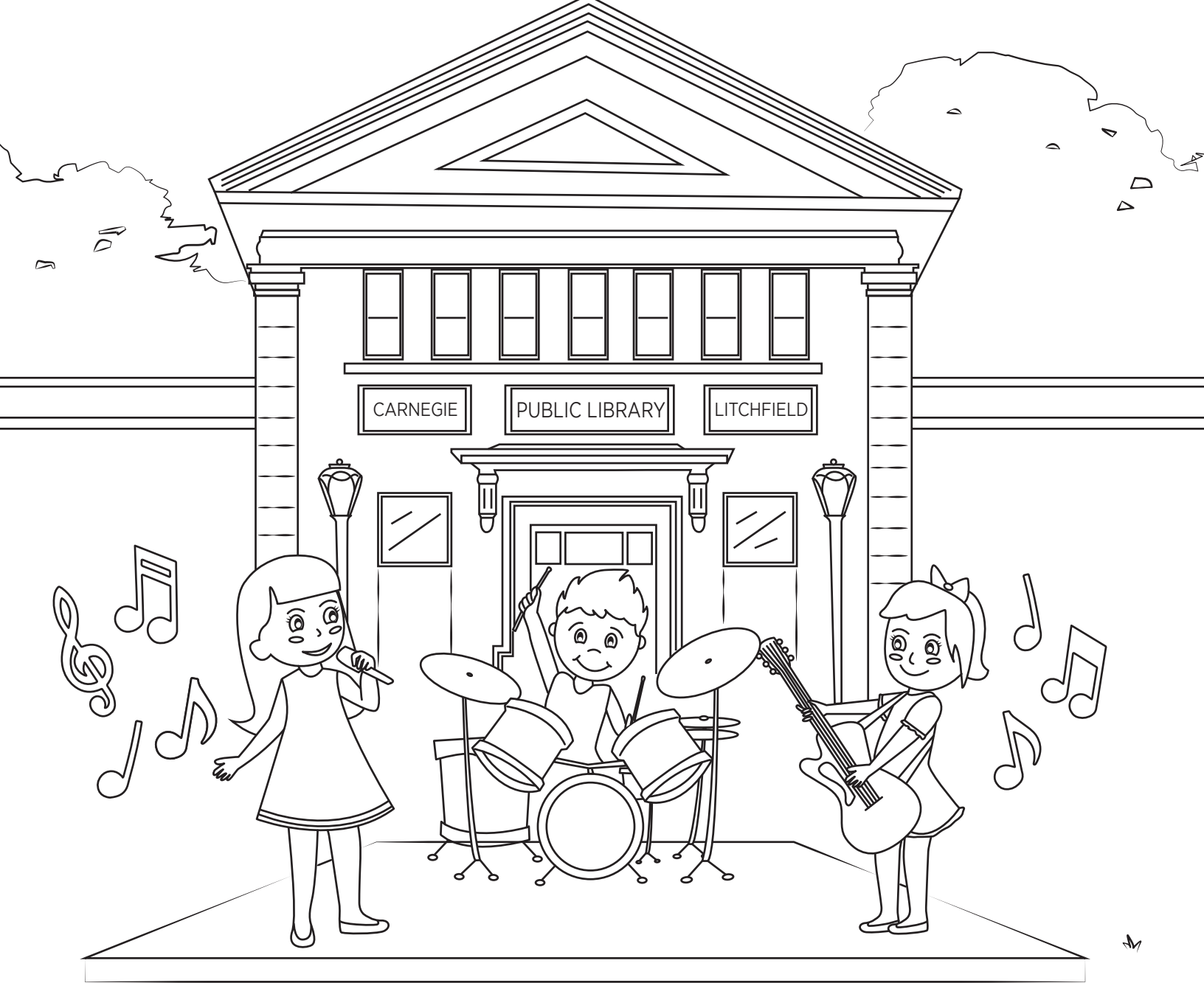


ROUTE 66 HIKE
& BIKE TRAIL
AT LAKE LOU YAEGER

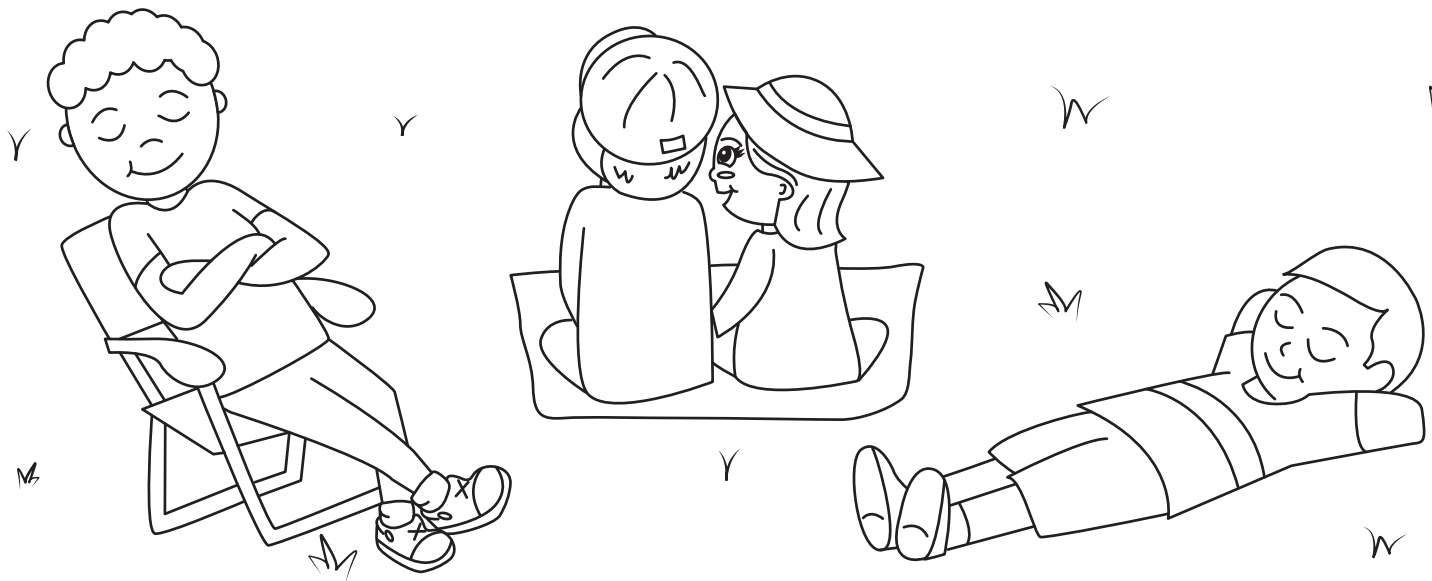


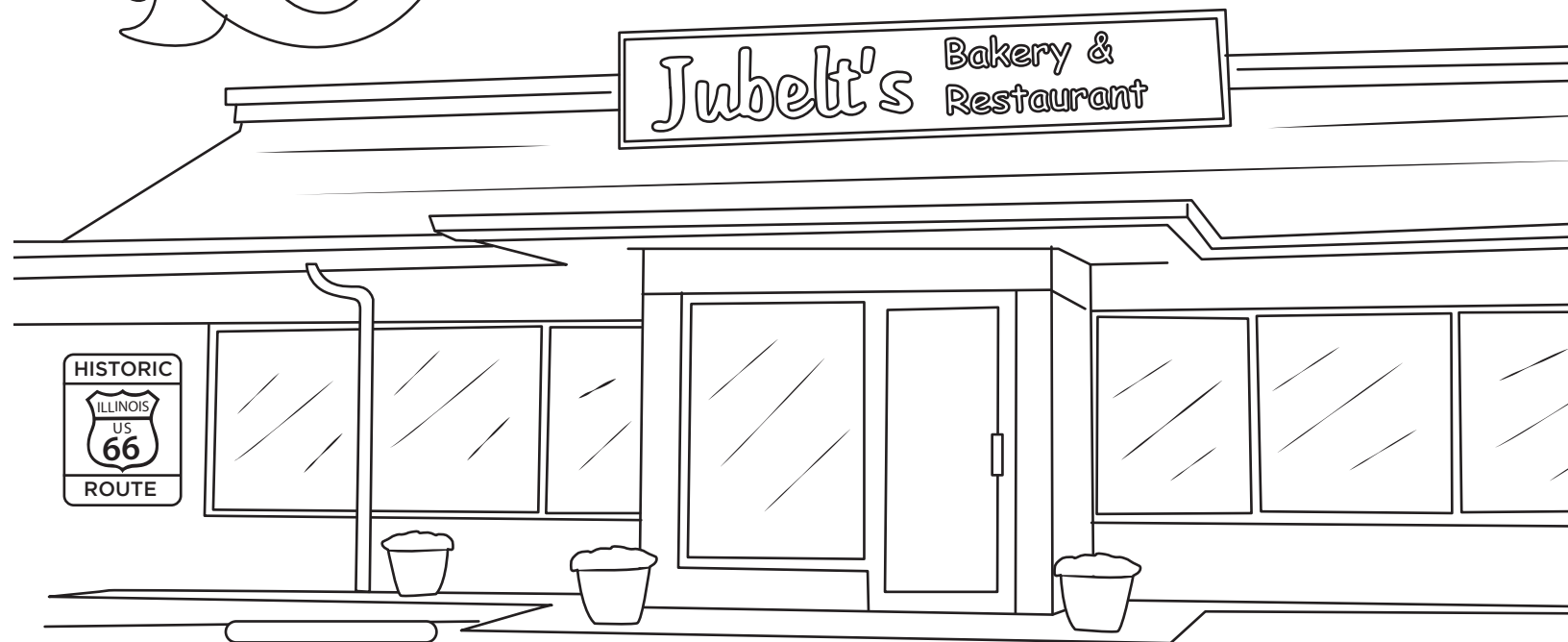
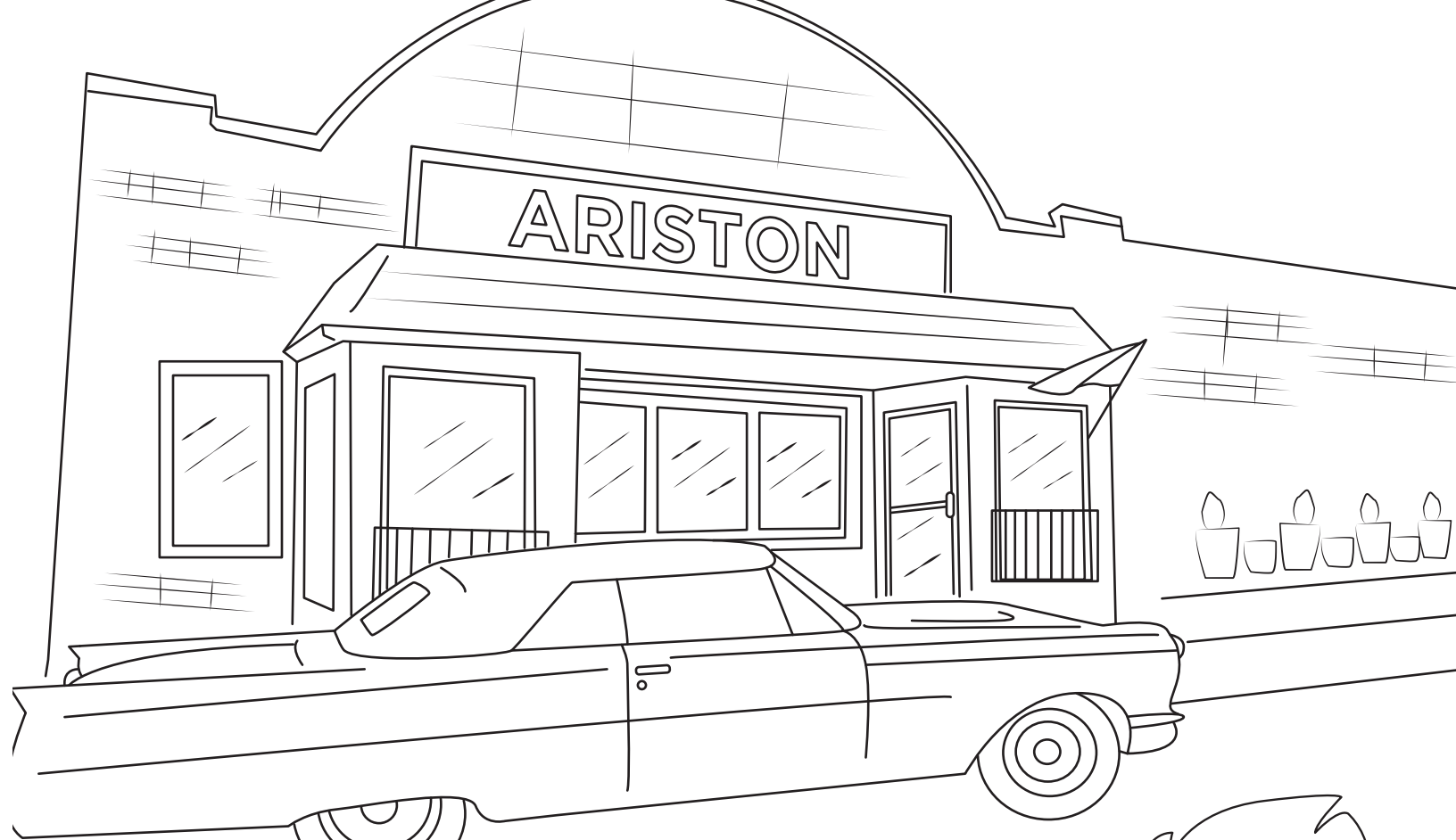
EAGLE WATCHING





Library Park





Get Your Kicks!

Litchfield, Illinois is a fun place to visit for both children and adults. Catch some fish at Lake Lou Yaeger, jump off the diving board at Milnot Beach, watch a movie from your car at the Litchfield Skyview Drive-In, or pick out your favorite sweet treat from the dessert counter at Jubelt's Bakery and Restaurant. These are just a few experiences that make your trip fun for the whole family. We can't wait to see you when you visit Litchfield, Illinois!



Litchfield
ILLINOIS 

VisitLitchfield.com | 866-733-5833