

### Museum Hours

April - October: Monday - Saturday 10 a.m. - 4 p.m.

November - March: Tuesday - Saturday 10 a.m. - 4 p.m.

Every Sunday 1 p.m. - 4 p.m.

(except on holidays).

Admission is free.

Please check our website for  
any changes to the schedule.

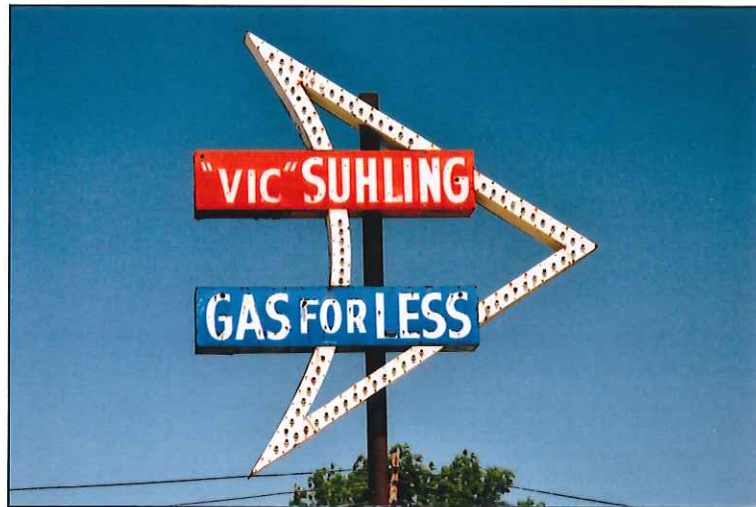
[www.litchfieldmuseum.org](http://www.litchfieldmuseum.org)

Mailing Address:

P.O. Box 43

Litchfield, IL 62056-0043

Phone: 217-324-3510



### Our Mission Statement

"The purpose of the Litchfield Museum & Route 66 Welcome Center is to preserve the heritage of Litchfield for generations to come and to extend our welcome to those who come to learn and reminisce."

# LITCHFIELD MUSEUM & ROUTE 66 WELCOME CENTER

*Route 66 Corridor 1930-1940*

334 Historic Old Route 66 N.

Litchfield, IL 62056



# *WELCOME*

## History of Development of Litchfield Museum & Route 66 Welcome Center

April 11, 2011, Chick Bishop, Anne Jackson, Carol Burke, and Martha Jackson met with the idea of developing a Litchfield Museum. A place to highlight Litchfield and save Litchfield's rich history and heritage.

After the news release April 12, 2011, much interest was exhibited by Litchfield citizens and civic groups to form such a project. To have a Welcome Center was then added to this plan.

May 1, 2011, in a public invited meeting the Litchfield Museum and Welcome Center Association was formed. The group set the following goals:

1. To find a location hopefully on Route 66
2. To provide a modern building in which citizens would feel confident that any loan or gift of Litchfield memorabilia would be secure
3. To have a building that is handicapped accessible
4. The location would provide ample parking
5. The location might possibly have space for expanding

Property on Historic Route 66 was purchased and donated to the Association. June 14, 2011, Route 66 was added to the title to read- Litchfield Museum & Route 66 Welcome Center.

The Montgomery County Genealogical Society was invited to have office spaces to provide a secure place to save their historical documents and assist those researching family histories.

Space has been provided to the Litchfield Chamber of Commerce so they can show-case Litchfield businesses and current products. The tourism coordinator for the city was offered space to market Litchfield events, and artifacts telling the history of Route 66 are on display.

The first loan/donation for the museum was the 1904 cornerstone and time capsule from the old American Radiator Company presented by Affinia Brake Parts Company.

After months of waiting, The Association received their 501c (3) Making us a non for profit organization.

Grants from the Corwin and Elizabeth Baker Trust Funds provided the seed money to start the activities of the Association. The sale of 150 hardback books of Historic Postcards of Litchfield was our first money making project.

A building design by John Fletcher was chosen and Dave Lipe was selected as the architect. Larry Pence president of Litchfield United Builders was the contractor.

May 1, 2012, construction started. We must applaud the workers that were there daily in over 100 degree temperature, and the subcontractors who were also most generous in their donations.

Andrew Ritchie, association member and city administrator, made a 2,000 mile bicycle trip on US Route 66 from California to Chicago, Illinois during May as a fund raising project.

The museum is staffed by members of the Museum Association, members of the Montgomery County Genealogical Society, and selected volunteers (greeters) from the community.

## Floor plan of Litchfield Museum & Route 66 Welcome Center

